



## **TUTORIALS**

How to Connect Binance Futures  
with your TFLOW Trading Platform

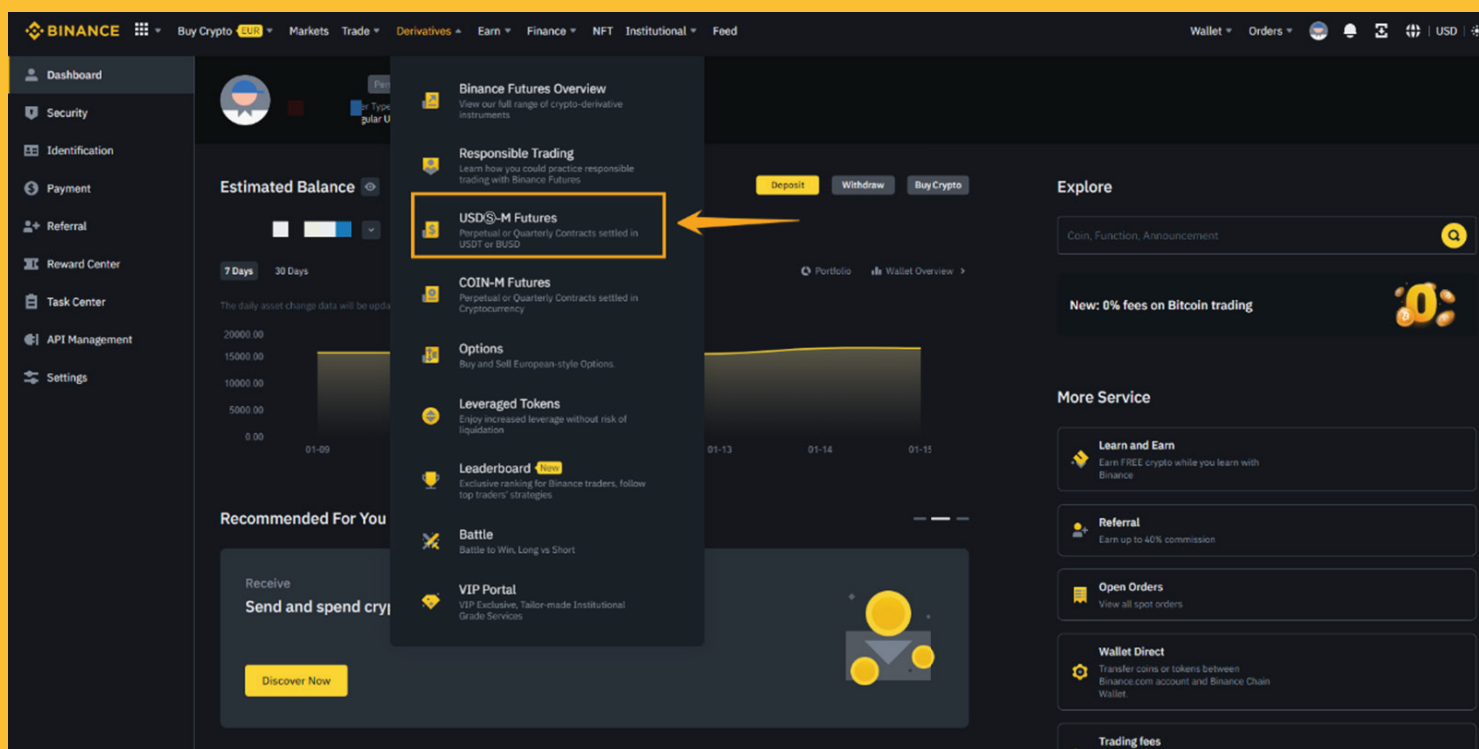
TFC Services Inc.

# Binance Futures

Welcome to our **Binance Futures Tutorial**. In this article we will show you how to set up your your **Binance Futures Account** with your **TFLOW Trading Platform Profile**

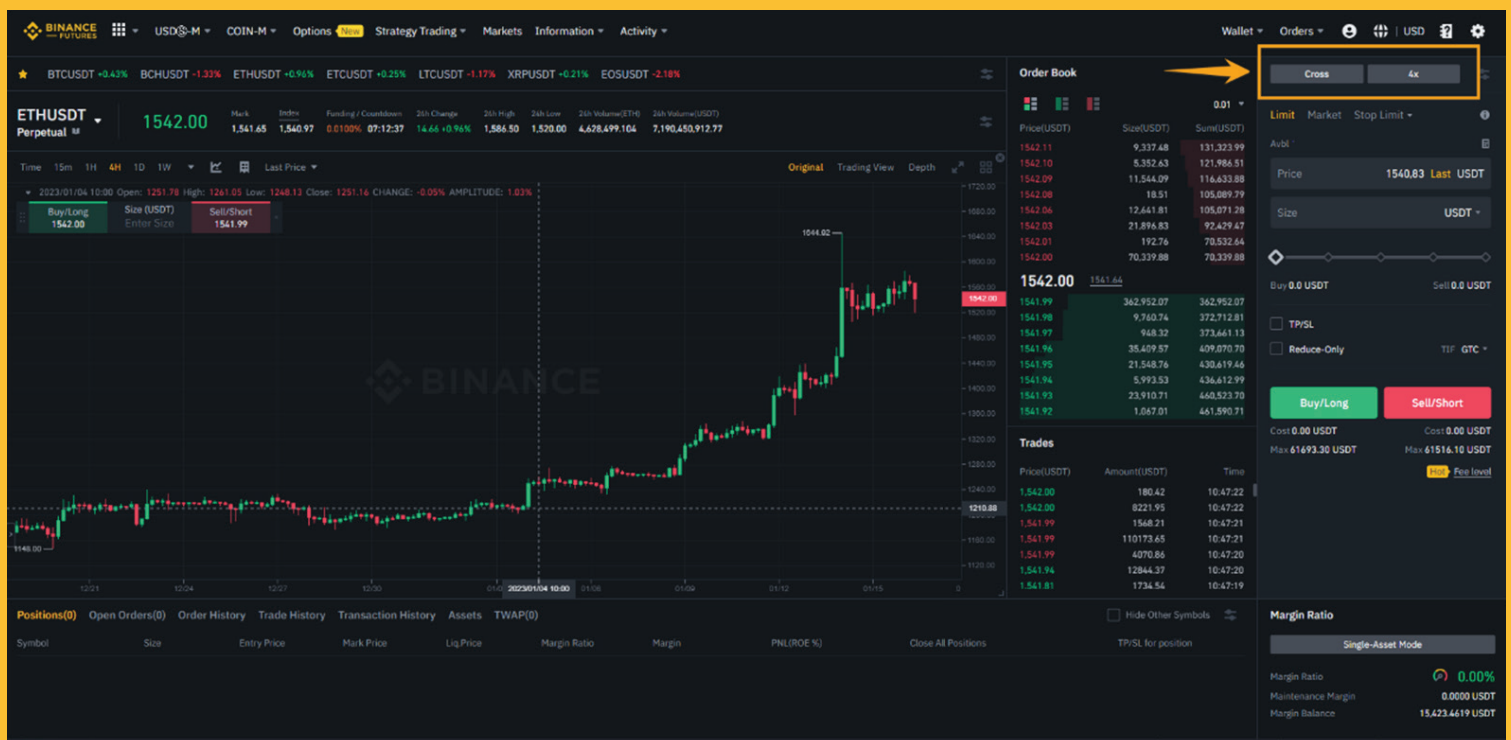
## Step 1. USDS-M Futures option

Go to your **Binance Account** and select the **USDS-M Futures** option.



## Step 2. Mode & Leverage

Select the ETHUSDT Perpetual Contract. Then go to the up-right section and change the mode to cross. Do not change the leverage it is automatically set by our Bot at X4.



## Step 3. Deactivate Binance Default API Security Settings

Go to your API Management Page and untick the default settings box

The screenshot shows the Binance API Management page. The left sidebar has the 'API Management' tab selected. The main content area features a yellow warning box with a checked checkbox and an orange box labeled 'UNCHECK THE TICK BOX'. The warning box contains the following text:

☒ By checking this box, all existing API Key(s) on your master account and sub-accounts will be subject to Default Security Controls.

**Default Security Controls Details** ^

We strongly recommend against enabling API key(s) for additional permissions (other than reading) without defining the appropriate IP access restrictions ("Unrestricted-IP-Access API Key(s)"). Enabling such Unrestricted-IP-Access API Key(s) would cause an increased risk of unauthorized access to your Binance Account.

By default, the following security controls ("Default Security Controls") would apply (including but not limited to):

- Symmetric HMAC Unrestricted-IP-Access API Key(s) being:
  - prevented from enabling permissions for trading;
  - periodically disabled if previously enabled with permissions for trading; and
  - periodically deleted whether inactive or active.
- Asymmetric RSA Unrestricted-IP-Access API Key(s) being:
  - periodically disabled if previously enabled with permissions for trading; and
  - periodically deleted if inactive.

For the avoidance of doubt, the Default Security Controls may, at the sole discretion of Binance, be subject to change without prior notification.

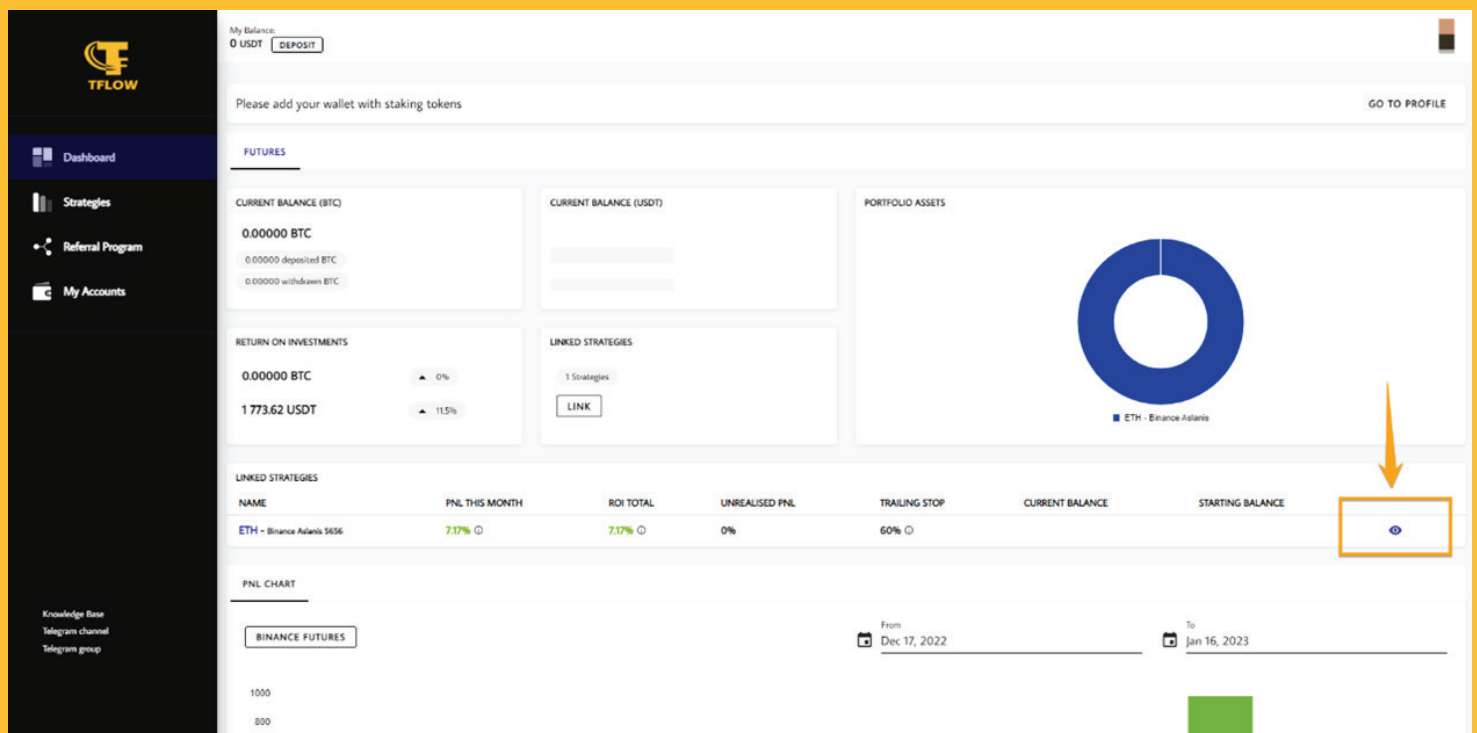
Please be reminded that you should not disclose or share your API key(s). Disclosing your API key(s) and other access credentials could lead to your Binance Account being compromised. You are solely responsible for taking the necessary security measures to protect your Binance Account, your API key(s), access credentials and personal information.

Below the warning box, there are two API keys listed with 'Edit restrictions' and 'Delete' buttons:

API Key	Permissions	IP Access Restrictions	Actions
HMAC	Read	None	Edit restrictions Delete
HMAC	Read	None	Edit restrictions Delete

## Step 4. TFLOW Dashboard

Go to your TFLOW Trading Platform Dashboard and at the strategy section click on the eye icon.



The screenshot displays the TFLOW Trading Platform Dashboard. On the left is a dark sidebar with the TFLOW logo and navigation links: Dashboard, Strategies, Referral Program, and My Accounts. The main content area is titled 'FUTURES' and includes sections for 'CURRENT BALANCE (BTC)', 'CURRENT BALANCE (USD)', 'PORTFOLIO ASSETS' (a donut chart for ETH - Binance Assets), 'RETURN ON INVESTMENTS', and 'LINKED STRATEGIES'. A table lists the linked strategies with columns for Name, PNL This Month, ROI Total, Unrealised PNL, Trailing Stop, Current Balance, and Starting Balance. The first entry is 'ETH - Binance Assets 5656' with a PNL of 7.17% and an ROI of 7.17%. An eye icon in the bottom right corner of the table is highlighted with an orange box and an arrow. Below the table is a 'PNL CHART' section with a date range from Dec 17, 2022, to Jan 16, 2023, and a green bar chart.


My Balance: 0 USDT [DEPOSIT](#)

Please add your wallet with staking tokens [GO TO PROFILE](#)

### FUTURES

**CURRENT BALANCE (BTC)**  
0.00000 BTC  
0.00000 deposited BTC  
0.00000 withdrawn BTC

**CURRENT BALANCE (USD)**

**PORTFOLIO ASSETS**  
  
■ ETH - Binance Assets

**RETURN ON INVESTMENTS**  
0.00000 BTC ▲ 0%  
1 773.62 USDT ▲ 115%

**LINKED STRATEGIES**  
1 Strategies  
[LINK](#)

NAME	PNL THIS MONTH	ROI TOTAL	UNREALISED PNL	TRAILING STOP	CURRENT BALANCE	STARTING BALANCE
ETH - Binance Assets 5656	7.17%	7.17%	0%	60%		

**LINKED STRATEGIES**

**PNL CHART**

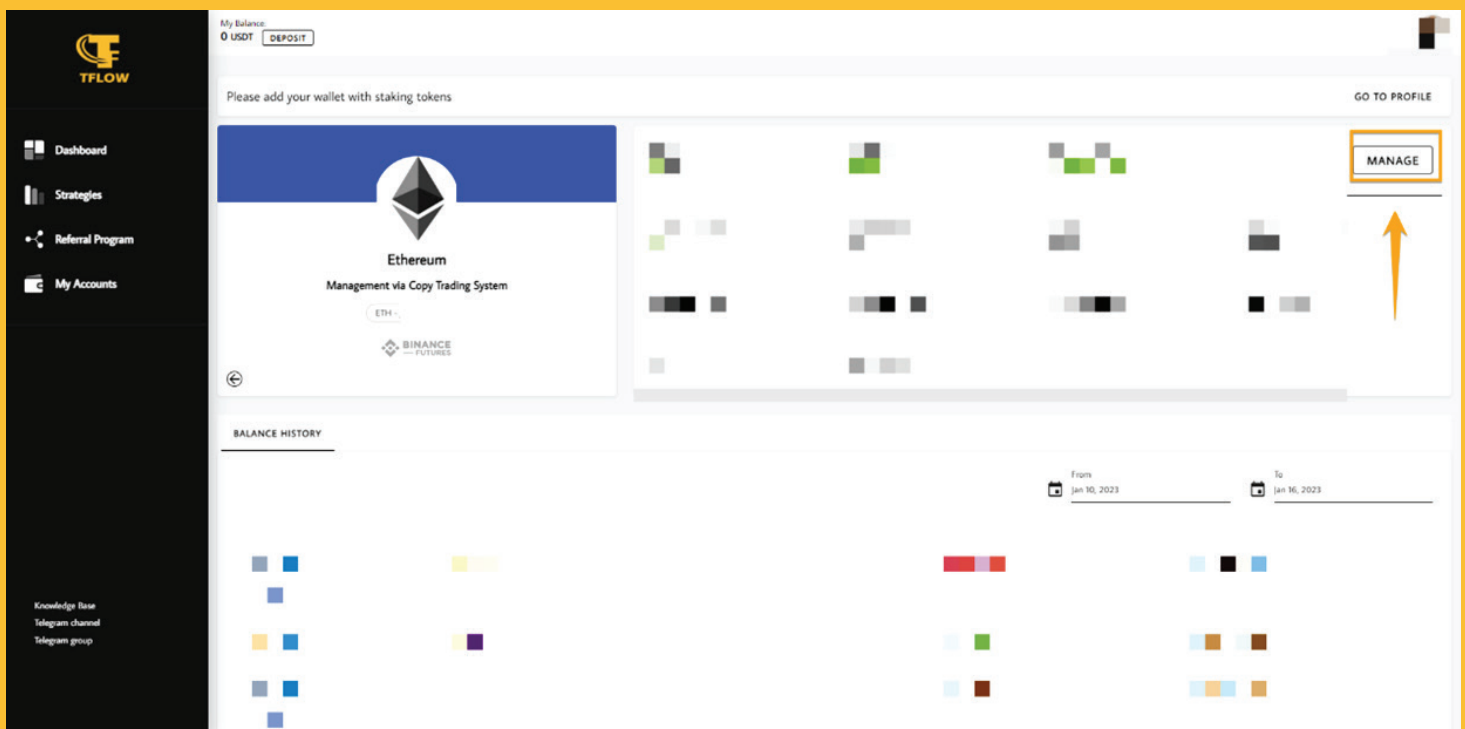
[BINANCE FUTURES](#)

From Dec 17, 2022 To Jan 16, 2023

1000  
800

## Step 5. Strategy page

In the Strategy page click on manage and select advanced settings from the dropdown menu.



## Step 6. Advanced Settings

In the pop up menu set the Lot Size Ratio at 100% so the Bot will use a X1 Leverage in your account (25% of your balance with X4 Leverage) or 200% so the Bot will use X2 Leverage in your account. We recommend you to start with 100% Lot Size Ratio.

### ADVANCED SETTINGS

Lot Size Ratio  
100%

i

Maximum Drawdown  
60%

i

ATTENTION! If you decrease the lot size, having open positions with negative PnL, then the part of the position will be fixed as a loss. We recommend to change the lot size only if positions are closed or having positive PnL.

CANCEL

SAVE